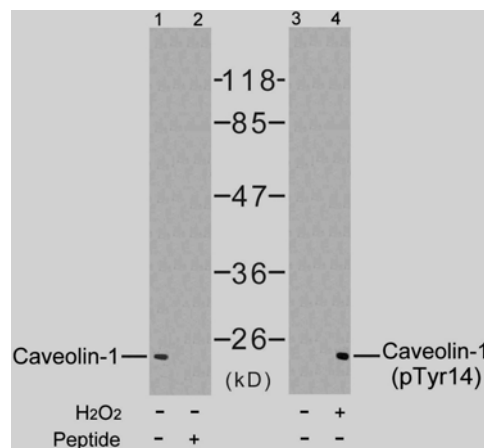


## Rabbit anti Caveolin-1 (pTyr14)

- Catalog Number:** pAP11090  
**Amount:** 100µl (for 10 Western Blotting)  
**Form of Antibody:** Rabbit IgG in phosphate buffered saline (without Mg<sup>2+</sup> and Ca<sup>2+</sup>), pH 7.4, 150mM NaCl, 0.02% sodium azide and 50% glycerol.  
**Storage/Stability:** Store at -20°C/1 year  
**Immunogen:** The antiserum was produced against synthesized phosphopeptide derived from human Caveolin-1 around the phosphorylation site of tyrosine 14 (H-L-Y<sup>P</sup>-T-V).  
**Purification:** The antibody was affinity-purified from rabbit antiserum by affinity-chromatography using epitope-specific phosphopeptide. The antibody against non-phosphopeptide was removed by chromatography using non-phosphopeptide corresponding to the phosphorylation site.  
**Specificity/Sensitivity:** Caveolin-1 (phospho-Tyr14) antibody detects endogenous levels of Caveolin-1 only when phosphorylated at tyrosine 14.  
**Reactivity:** Human, Mouse, Rat  
**Applications:** WB: 1:1000  
**Swiss-Prot No. :** Q03135  
**References:** Zhang Y, et al. (2005) Mol Cell Proteomics. 4(9): 1240-1250.  
Labrecque L, et al. (2004) J Biol Chem. 279(50): 52132-52140.  
Fielding PE, et al. (2004) Biochemistry. 43(9): 2578-2586.  
Labrecque L, et al. (2003) Mol Biol Cell. 14(1): 334-347.  
Maggi D, et al. (2002) Biochem Biophys Res Commun. 295(5): 1085-1089.



Western blot analysis of the extract from NIH/3T3 cells untreated or treated with H<sub>2</sub>O<sub>2</sub> using Caveolin-1 (Ab-14) antibody (AP21112, Lane 1 and 2) and Caveolin-1 (phospho-Tyr14) antibody (pAP11090, Lane 3 and 4).

**For Research Use Only**

Contact & Ordering Information: Angio-Proteomie, 11 Park Drive, Suite 12, Boston, MA 02215, USA. Fax: (480) 247-4337, [angioproteomie@gmail.com](mailto:angioproteomie@gmail.com)