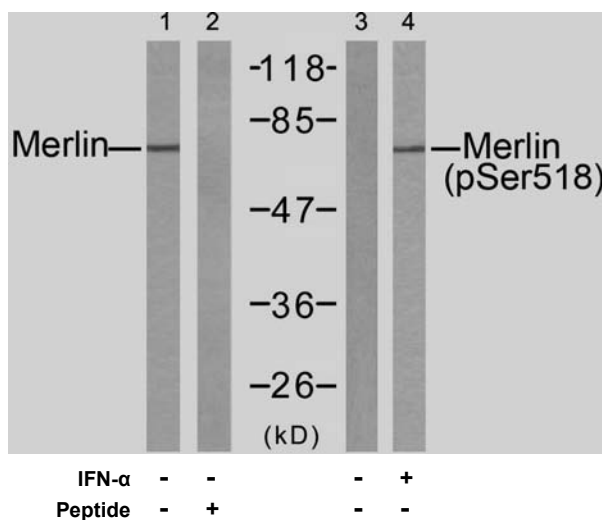


Rabbit anti Merlin (pSer518)

- Catalog Number:** pAP11266
Amount: 100µl (for 10 Western Blotting)
Swiss-Prot No. : P35240
Form of Antibody: Rabbit IgG in phosphate buffered saline (without Mg²⁺ and Ca²⁺), pH 7.4, 150mM NaCl, 0.02% sodium azide and 50% glycerol.
Storage/Stability: Store at -20°C/1 year
Immunogen: The antiserum was produced against synthesized phosphopeptide derived from human Merlin around the phosphorylation site of serine 518 (R-L-S^P-M-E).
Purification: The antibody was affinity-purified from rabbit antiserum by affinity-chromatography using epitope-specific phosphopeptide. The antibody against non-phosphopeptide was removed by chromatography using non-phosphopeptide corresponding to the phosphorylation site.
Specificity/Sensitivity: Merlin (phospho-Ser518) antibody detects endogenous levels of Merlin only when phosphorylated at serine 518.
Reactivity: Human, Mouse, Rat
Applications: WB: 1:1000
References: Guang-Hui Xiao, et.al. (2005) Mol. Cell. Biol ; 25: 2384 - 2394.
 Hi-Su Yang, et.al. (2006) Cancer Res ; 66: 2708 - 2715.
 R Bohni, et.al. (1994) J. Biol. Chem ; 269: 14541 - 14545.
 Adam J. Ratner, et.al. (2001) J. Biol. Chem ; 276: 19267 - 19275.



Western blot analysis of extracts from HUVEC cells untreated or treated with IFN-α (100ng/ml, 15min), using Merlin (Ab-518) antibody (AP21258, Line 1 and 2) and Merlin (phospho-Ser518) antibody (pAP11266, Line 3 and 4).

For Research Use Only

Contact & Ordering Information: Angio-Proteomie, 11 Park Drive, Suite 12, Boston, MA 02215, USA. Fax: (480) 247-4337, angioproteomie@gmail.com