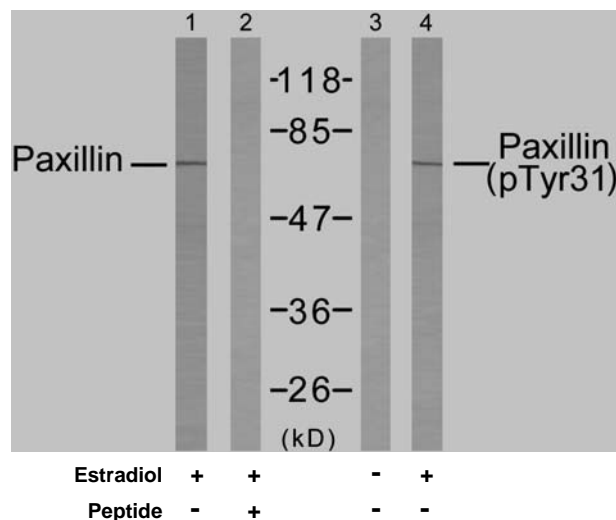


Rabbit anti Paxillin (pTyr31)

- Catalog Number:** pAP11201
Amount: 100µl (for 10 Western Blotting)
Swiss-Prot No. : P49023
All Names: PAX-1, PXN, Paired box protein Pax-1, paxillin, paxillin alpha
All Sites: Human: Tyr31
Swiss-Prot No. : P49023
All names: Paxillin, PAXI, PXN, Paired box protein Pax-1, PAX-1
Form of Antibody: Rabbit IgG in phosphate buffered saline (without Mg²⁺ and Ca²⁺), pH 7.4, 150mM NaCl, 0.02% sodium azide and 50% glycerol.
Storage/Stability: Store at -20°C/1 year
Immunogen: The antiserum was produced against synthesized phosphopeptide derived from human Paxillin around the phosphorylation site of tyrosine 31 (T-P-Y^P-S-Y).
Purification: The antibody was affinity-purified from rabbit antiserum by affinity-chromatography using epitope-specific phosphopeptide. The antibody against non-phosphopeptide was removed by chromatography using non-phosphopeptide corresponding to the phosphorylation site.
Specificity/Sensitivity: Paxillin (phospho-Tyr31) antibody detects endogenous levels of Paxillin only when phosphorylated at tyrosine 31.
Reactivity: Human
Applications: WB: 1:1000
References: Davidson D, et al. (2001) EMBO J 20(13): 3414-3426.
 Fleming I, et al. (1999) Proc Natl Acad Sci U S A 96(3): 1123-1128.
 Goldberg MB. (2001) Microbiol Mol Biol Rev 65(4): 595-626.
 Kook S, et al. (2000) Mol Biol Cell 11(3): 929-939.



Western blot analysis of extracts from SK-OV3 cells untreated or estradiol-treated (0.1µM, 20min), using Paxillin (Ab-31) antibody (AP21199, Lane 1 and 2) and Paxillin (phospho-Tyr31) antibody (pAP11201, Lane 3 and 4).

For Research Use Only

Contact & Ordering Information: Angio-Proteomie, 11 Park Drive, Suite 12, Boston, MA 02215, USA. Fax: (480) 247-4337, angioproteomie@gmail.com