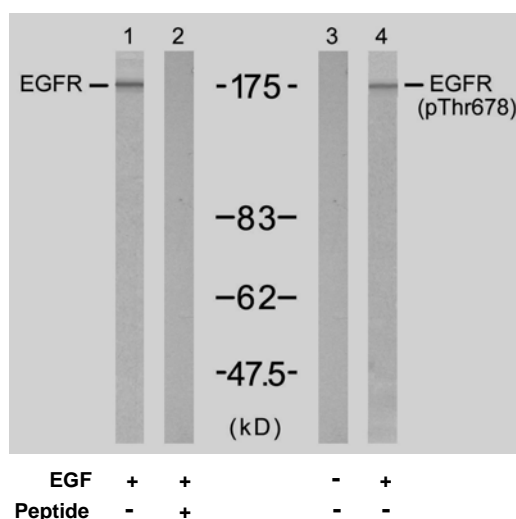


Rabbit anti EGFR (pThr678)

- Catalog Number:** pAP11186
Amount: 100µl (for 10 Western Blotting)
Swiss-Prot No. : P00533
Form of Antibody: Rabbit IgG in phosphate buffered saline (without Mg²⁺ and Ca²⁺), pH 7.4, 150mM NaCl, 0.02% sodium azide and 50% glycerol.
Storage/Stability: Store at -20°C/1 year
Immunogen: The antiserum was produced against synthesized phosphopeptide derived from human EGFR around the phosphorylation site of threonine 678 (K-R-T^P-L-R).
Purification: The antibody was affinity-purified from rabbit antiserum by affinity-chromatography using epitope-specific phosphopeptide. The antibody against non-phosphopeptide was removed by chromatography using non-phosphopeptide corresponding to the phosphorylation site.
Specificity/Sensitivity: EGFR (phospho-Thr678) antibody detects endogenous levels EGFR only when phosphorylated at threonine 678.
Reactivity: Human, Mouse, Rat
Applications: WB: 1:1000
References: Doherty JK, et al. (1999) Proc Natl Acad Sci U S A; 96(19): 10869-10874
Wu TT, et al. (1998) Mol Biol Cell; 9(7): 1661-1674
O'Rourke DM, et al. (1997) Proc Natl Acad Sci U S A; 94(7): 3250-3255
Noguchi T, et al. (1994) Mol Cell Biol; 14(10): 6674-6682
Kanner SB, et al. (1991) Mol Cell Biol; 11(2): 713-720



Western blot analysis of extracts from A431 cells untreated or treated with EGF (200ng/ml, 5min), using EGFR (Ab-678) antibody (AP21193, Line 1 and 2) and EGFR (phospho-Thr678) antibody (pAP11186, Line 3 and 4).

For Research Use Only

Contact & Ordering Information: Angio-Proteomie, 11 Park Drive, Suite 12, Boston, MA 02215, USA. Fax: (480) 247-4337, angioproteomie@gmail.com