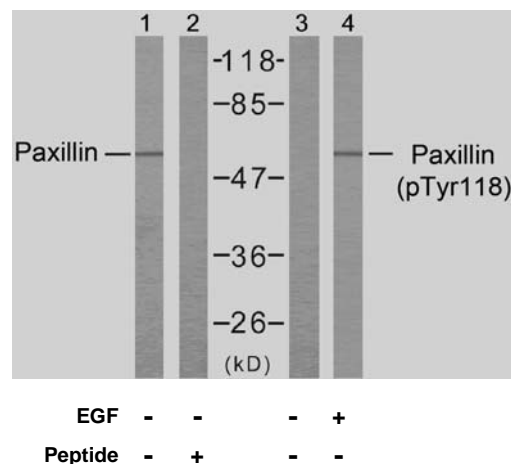


## Rabbit anti Paxillin (pTyr118)

- Catalog Number:** pAP11089  
**Amount:** 100µl (for 10 Western Blotting)  
**Form of Antibody:** Rabbit IgG in phosphate buffered saline (without Mg<sup>2+</sup> and Ca<sup>2+</sup>), pH 7.4, 150mM NaCl, 0.02% sodium azide and 50% glycerol.  
**Storage/Stability:** Store at -20°C/1 year  
**Immunogen:** The antiserum was produced against synthesized phosphopeptide derived from human Paxillin around the phosphorylation site of tyrosine 118 (H-V-Y<sup>P</sup>-S-F).  
**Purification:** The antibody was affinity-purified from rabbit antiserum by affinity-chromatography using epitope-specific phosphopeptide. The antibody against non-phosphopeptide was removed by chromatography using non-phosphopeptide corresponding to the phosphorylation site.  
**Specificity/Sensitivity:** Paxillin (phospho-Tyr118) antibody detects endogenous levels of Paxillin only when phosphorylated at tyrosine 118.  
**Reactivity:** Human, Mouse, Rat  
**Applications:** WB: 1:1000  
**Swiss-Prot No. :** P49023  
**References:** Tao WA, et al.(2005)Nat Methods.2(8): 591-598.  
 Zhang Y, et al.(2005) Mol Cell Proteomics.4(9): 1240-1250.  
 Sanders MA, et al.(2005)J Biol Chem.280(25): 23516-23522.  
 Rush J, et al.(2004) Nat Biotechnol. 23(1): 94-101.



Western blot analysis of the extracts from HeLa cells using Paxillin (Ab-118) antibody (AP21107, Lane 1 and 2) and Paxillin (phospho-Tyr118) antibody (pAP11089, Lane 3 and 4).

**For Research Use Only**

Contact & Ordering Information: Angio-Proteomie, 11 Park Drive, Suite 12, Boston, MA 02215, USA. Fax: (480) 247-4337, [angioproteomie@gmail.com](mailto:angioproteomie@gmail.com)