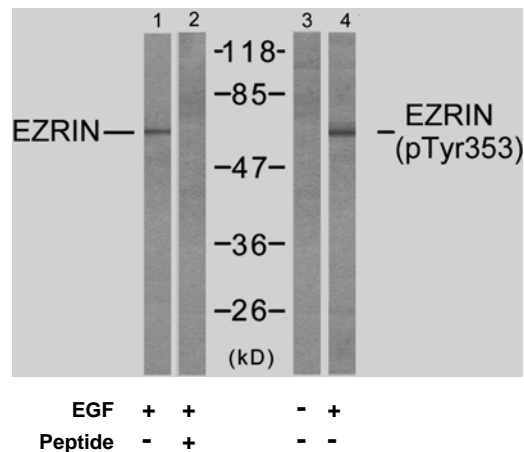


Rabbit anti Ezrin (pTyr353)

- Catalog Number:** pAP11063
Amount: 100µl (for 10 Western Blotting)
Swiss-Prot No. : P15311
All Names: Cytovillin, EZRI, VIL2, Villin 2, p81
All Sites: Human: Tyr353; Mouse: Tyr353
Form of Antibody: Rabbit IgG in phosphate buffered saline (without Mg²⁺ and Ca²⁺), pH 7.4, 150mM NaCl, 0.02% sodium azide and 50% glycerol.
Storage/Stability: Store at -20°C/1 year
Immunogen: The antiserum was produced against synthesized phosphopeptide derived from human Ezrin around the phosphorylation site of tyrosine 353 (Q-D-Y^P-E-E).
Purification: The antibody was affinity-purified from rabbit antiserum by affinity-chromatography using epitope-specific phosphopeptide. The antibody against non-phosphopeptide was removed by chromatography using non-phosphopeptide corresponding to the phosphorylation site.
Specificity/Sensitivity: Ezrin (phospho-Tyr353) antibody detects endogenous levels of Ezrin only when phosphorylated at tyrosine 353.
Reactivity: Human, Mouse
Applications: WB: 1:1000
References: Zhao H, et al. (2004) Proc Natl Acad Sci U S A 101 (25): 9485-9490.
Wang Q, et al. (2003) J Biol Chem 278(48): 47731-47743.
Gautreau A, et al. (1999) Proc Natl Acad Sci U S A 96(13): 7300-7305.
Crepaldi T, et al. (1997) J Cell Biol 138(2): 423-34.



Western blot analysis of extracts from A431 cells, untreated or EGF-treated (200ng/ml, 30min), using Ezrin (Ab-353) antibody (AP21094, Lane 1 and 2) and Ezrin (phospho-Tyr353) antibody (pAP11063, Lane 3 and 4).

For Research Use Only

Contact & Ordering Information: Angio-Proteomie, 11 Park Drive, Suite 12, Boston, MA 02215, USA. Fax: (480) 247-4337, angioproteomie@gmail.com