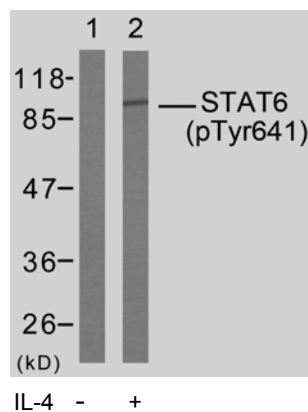


## Rabbit anti STAT-6 (pTyr641)

- Catalog Number:** pAP11050  
**Amount:** 100µl (for 10 Western Blotting)  
**Form of Antibody:** Rabbit IgG in phosphate buffered saline (without Mg<sup>2+</sup> and Ca<sup>2+</sup>), pH 7.4, 150mM NaCl, 0.02% sodium azide and 50% glycerol.  
**Storage/Stability:** Store at -20°C/1 year  
**Immunogen:** The antiserum was produced against synthesized phosphopeptide derived from human STAT6 around the phosphorylation site of Tyrosine 641 (R-G-Y<sup>P</sup>-V-P).  
**Purification:** The antibody was affinity-purified from rabbit antiserum by affinity-chromatography using epitope-specific phosphopeptide. The antibody against non-phosphopeptide was removed by chromatography using non-phosphopeptide corresponding to the phosphorylation site.  
**Specificity/Sensitivity:** STAT6 (phospho-Tyr641) antibody detects endogenous levels of STAT6 only when phosphorylated at tyrosine 641.  
**Reactivity:** Human  
**Applications:** WB: 1:1000  
**Swiss-Prot No. :** P42226  
**References:** Nelms K, et al. (1999) Annu Rev Immunol. 17:701-738.  
Malabarba M G, et al. (1996) Biochem. J. 319:865-872.  
Hou J, et al. (1994) Science. 265:1701-1706.  
Quelle F W, et al. (1995) Mol Cell Biol. 15: 3336-3343.



Western blot analysis of extract from HeLa cells, using STAT6 (phospho-Tyr641) antibody (pAP11050)

### For Research Use Only

Contact & Ordering Information: Angio-Proteomie, 11 Park Drive, Suite 12, Boston, MA 02215, USA. Fax: (480) 247-4337, [angioproteomie@gmail.com](mailto:angioproteomie@gmail.com)