

## bs-7668R-PE-Cy3

### • Rabbit Anti-GPR65 Polyclonal Antibody, PE-Cy3 conjugated

Conjugated Primary Antibodies

#### Background:

GPR65 is a member of the G protein coupled receptor family. It has been reported in human in peripheral blood leukocytes, spleen, lymph node, and thymus. The ligand for this protein is psychosine. GPR65 may have a role in activation-induced cell death or differentiation of T cells.

**Purification:** Was purified by Protein A and peptide affinity chromatography.

#### Storage:

Prepared as lyophilized powder or liquid and shipped on ice. Store at -20°C for one year. Protect from light.

#### Reconstitution:

If the antibody is in liquid form, no reconstitution needed.

Reconstitution is only required for the lyophilized antibody. Please refer to the reconstitution instruction card in the package.

**Size:** 100ul or 100ug lyophilized

**Concentration:** 1ug/uL

**Host:** Rabbit

**Reactivities:** Human, Mouse, Rat,

**Application:**

- FACS(1:100-500)
- IF(1:100-500)
- Not yet tested in other applications.  
Optimal working dilutions must be determined by the end user.

**Antibody Type:** Polyclonal

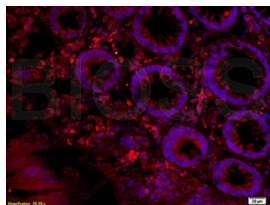
**Isotype:** IgG

**Molecular Weight:** 37kDa

**Preservatives:**

10ug/uL BSA and 0.1% NaN<sub>3</sub>.

For research use only. CAUTION: Not for human or animal therapeutic or diagnostic use.



For full size images and description please click [HERE](#).