

bs-7571R

• Rabbit Anti-RPS3 Polyclonal Antibody

Primary Antibodies

Background:

Ribosomal subunits are synthesized in the nucleus, and mature 40S and 60S subunits are exported stoichiometrically into the cytoplasm. Both 40S and 60S subunits are composed of four RNA species and approximately 80 structurally distinct proteins. Mitochondrial ribosomes consist of a small 28S subunit and a large 39S subunit. Ribosomal proteins have the ability to pass through the nuclear envelope in the native state, making them the largest of the structures accommodated by the nuclear pore complexes. The nuclear export of ribosomal subunits is a unidirectional, saturable and energy-dependent process. Ribosomal Protein S3 a member of the 40S subunit and plays a role in translation and ribosome maturation. Specifically, Ribosomal Protein S3 mediates the formation of the mRNA binding site 3' of the codon in the decoding site. In addition, Ribosomal Protein S3 is involved in DNA damage recognition as shown by its affinity for abasic sites and 7,8-dihydro-8-oxoguanine residues and its interaction with human base excision repair (BER) proteins OGG1 and Ref-1.

Source/Purification:

KLH conjugated synthetic peptide derived from human RPS3. Was purified by Protein A and peptide affinity chromatography.

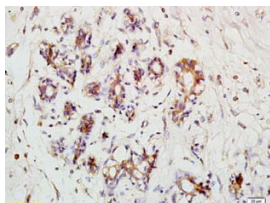
Storage:

Aqueous buffered solution containing 100ug/ml BSA, 50% glycerol and less than 0.09% sodium azide. Store at -20°C for 12 months. [Product without BSA and/or sodium azide is available for special order.]

Reconstitution:

If the antibody is in liquid form, no reconstitution needed.

Reconstitution is only required for the lyophilized antibody. Please refer to the reconstitution instruction card in the package.



For full size images and description please click [HERE](#).

Size: 100ul

Concentration: 1ug/uL

Host: Rabbit

Reactivities:

Human, Mouse, Rat, Xenopus laevis, NonPrimates,

Application:

- WB(1:100-500)
- ELISA(1:500-1000)
- IHC-P(1:100-500)
- IF(1:100-500)
- Not yet tested in other applications. Optimal working dilutions must be determined by the end user.

Antibody Type: Polyclonal

Isotype: IgG

Molecular Weight:

27/54 ribosomal chain dimerkDa

Note:

For research use only. CAUTION: Not for human or animal therapeutic or diagnostic use.