

bs-0014R-PE-Cy7

• Rabbit Anti-IGF 1 Polyclonal Antibody, PE-Cy7 conjugated

Conjugated Primary Antibodies

Background:

Insulin is a pancreatic hormone that regulates glucose uptake and the synthesis of protein and fat. The insulin like growth factors, isolated from plasma, are structurally and functionally related to insulin but have a much higher growth promoting activity. IGF1 (Insulin Like Growth Factor I) is a polypeptide growth factor, which stimulates the proliferation of a wide range of cell types including muscle, bone, and cartilage tissue. IGF1 functions as an autocrine regulator of growth.

Purification: Was purified by Protein A and peptide affinity chromatography.

Storage:

Aqueous buffered solution containing 100ug/ml BSA, 50% glycerol and less than 0.09% sodium azide. Store at -20°C for 12 months. Protect from light. [Product without BSA and/or sodium azide is available for special order.]

Reconstitution:

If the antibody is in liquid form, no reconstitution needed.

Reconstitution is only required for the lyophilized antibody. Please refer to the reconstitution instruction card in the package.

Size: 100ul

Concentration: 1ug/uL

Host: Rabbit

Reactivities:

Human, Mouse, Rat, Dog, Pig, Bovine, Rabbit, Sheep,

Application:

- IF(1:100-500)
- Not yet tested in other applications. Optimal working dilutions must be determined by the end user.

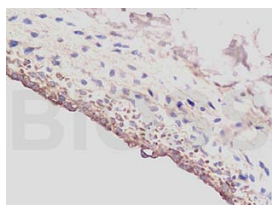
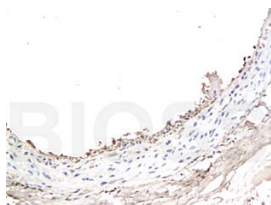
Antibody Type: Polyclonal

Isotype: IgG

Molecular Weight: 7.7kDa

Note:

For research use only. CAUTION: Not for human or animal therapeutic or diagnostic use.



For full size images and description please click [HERE](#).