



DetectX™  
**Cortisol Affinity Resin**  
Catalog Number: R001-500UL

**Amt/Quantity:** 0.5 mL settled resin

**Antibody:** 5 mg per mL settled resin of sheep polyclonal purified antibody specific to cortisol

**Format:** 50% slurry in PBS, pH 7.2, 0.1% Tween-20, 0.09% Kathon

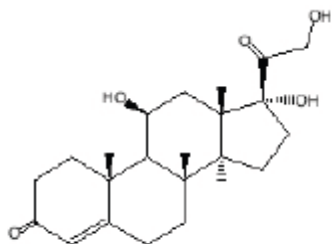
**Description:** A sheep antibody specific for cortisol coupled to 60-160µm agarose resin through mild chemistry yielding a stable resin with high binding capacity for cortisol

**Application:** As an affinity enrichment resin prior to mass spectrometry or other applications

**Capacity:** > 5.5 µg of Cortisol per mL of settled resin (Determined by immuno assay of 0.2M glycine, pH 2.5 eluate)

**CrossReactivity:** Not Tested

**Storage:** Store at 4°C. Do Not Freeze! Stable until expiration date printed on label



**FOR RESEARCH USE ONLY. NOT FOR USE IN DIAGNOSTIC PROTOCOLS**