



DATA SHEET

Range

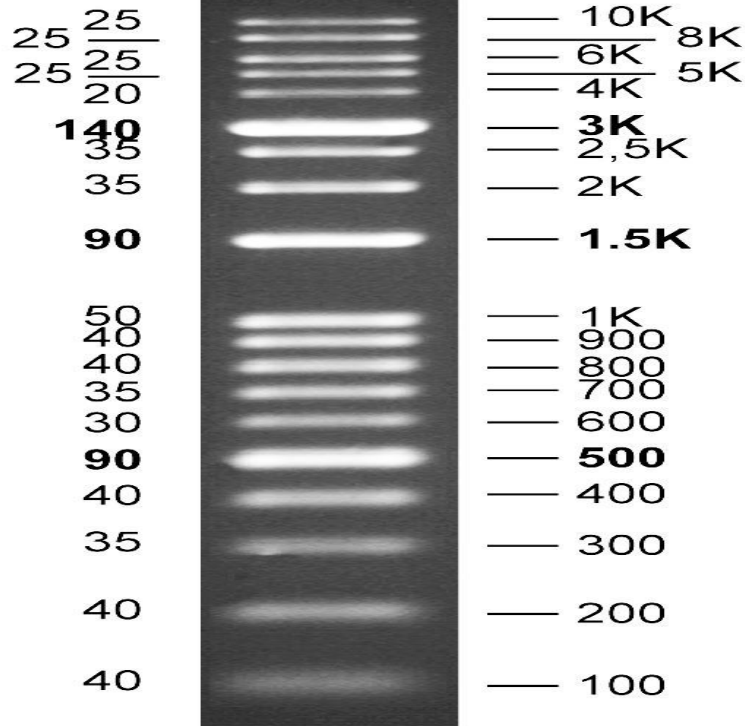
100bp-10kb

Number of Bands

19

**DNA Mass
(ng/5µl)**

Base Pairs



1.5 % TAE agarose gel

Package 500ul/100 loads

Suggested Load 5ul

Source PCR products and double-stranded DNA digested with appropriate restriction enzymes, are phenol extracted and equilibrated to 10mM Tris-HCl (pH 8.0) and 1mM EDTA.

Storage Store @ 25°C for 6 months or -20°C for 24 months.