



RayBiotech, Inc.

3607 Parkway Lane suite 200
Norcross, GA 30092
Tel: 770-729-2992, 1-888-494-8555
Fax: 770-206-2393
Website: www.raybiotech.com
Email: info@raybiotech.com

Certificate of Analysis and Data Sheet

Goat Anti-Cannabinoid Receptor 1

With HRP-conjugated Secondary Antibody

Catalog No.
ER-14-0265

Target Species
Human

Accession Number
NP_057167.2

Target Protein

Principal Names: cannabinoid receptor 1, OTTHUMP00000016839, OTTHUMP00000016838, CB1R, RPI-23D17.1, central cannabinoid receptor, HGNC:2159, CANN6, CB-R, CB1, CB1A, CB1K5, CNR, CNR1, cannabinoid receptor 1 (brain)

Official Symbol: CNR1

Accession Number(s): NP_057167.2; NP_001153732.1; NP_001153731.1; NP_001153730.1; NP_001153698.1; NP_149421.1

Human GeneID(s): 1268

Non-Human GeneID(s): 12801 (mouse), 25248 (rat)

Important Comments: This antibody is expected to recognize both reported isoforms. Isoform a (NP_057167.2; NP_001153732.1; NP_001153731.1; NP_001153730.1; NP_001153698.1) and isoform b (NP_149421.1).

Immunogen

Peptide with sequence C-HTSEDGKVQVTRPDQ, from the internal region of the protein sequence according to NP_057167.2; NP_001153732.1; NP_001153731.1; NP_001153730.1; NP_001153698.1; NP_149421.1.

Purification and Storage

Purified from goat serum by ammonium sulfate precipitation followed by antigen affinity chromatography using the immunizing peptide.

Supplied at 0.5 mg/ml in Tris saline, 0.02% sodium azide, pH7.3 with 0.5% bovine serum albumin. Aliquot and store at -20°C. Minimize freezing and thawing.

Applications Tested

Peptide ELISA: antibody detection limit dilution 1:32000.

Western blot: Approx 65kDa band observed in Rat Brain lysates (calculated MW of 52.7kDa according to Rat NP_036916.1 and 52.9kDa according to Human NP_057167.2). The observed molecular weight corresponds to earlier findings in literature with different antibodies (Porcella et al, Eur J Neurosci. 2000 Mar;12(3):1123-7. PMID: 10762343). Recommended concentration: 0.1-0.3µg/ml.

**The products are furnished for LABORATORY RESEARCH USE ONLY.
Not for diagnostic or therapeutic use.**



RayBiotech, Inc.

3607 Parkway Lane suite 200
Norcross, GA 30092
Tel: 770-729-2992, 1-888-494-8555
Fax: 770-206-2393
Website: www.raybiotech.com
Email: info@raybiotech.com

Species Reactivity

Tested: Human, Mouse

Expected from sequence similarity: Human, Mouse, Rat, Dog

Background Reference

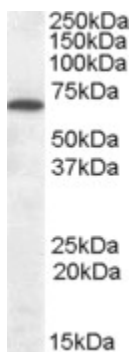
Ledent C, Valverde O, Cossu G, Petitet F, Aubert JF, Beslot F, Bohme GA, Imperato A, Pedrazzini T, Roques BP, Vassart G, Fratta W, Parmentier M Unresponsiveness to cannabinoids and reduced addictive effects of opiates in CB1 receptor knockout mice. *Science*. 1999 Jan 15;283(5400):401-4.

PMID: 9888857

Secondary Antibody Applications

Immunoassay (ELISA, Western blotting): 1:5,000-1:10,000

Images



ER-14-0265 (0.1µg/ml) staining of Rat Brain lysate (35µg protein in RIPA buffer).
Primary incubation was 1 hour. Detected by chemiluminescence.

**The products are furnished for LABORATORY RESEARCH USE ONLY.
Not for diagnostic or therapeutic use.**