

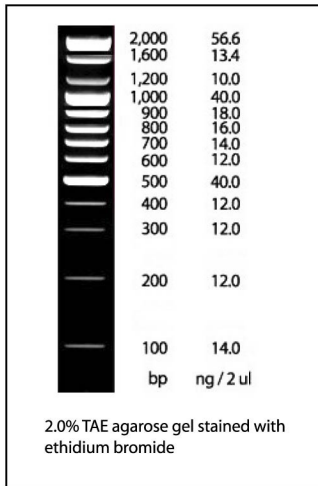


# DNA Ladders and Markers

Convenient, Ready-to-load, Bright and Sharp

- Designed for size determination and approximate quantification of DNA fragments
- Ready-to-load, no need to add loading buffer
- Available in a wide range of fragment sizes
- Bright and sharp bands with brighter reference bands
- Stable for up to 6 months at room temperature

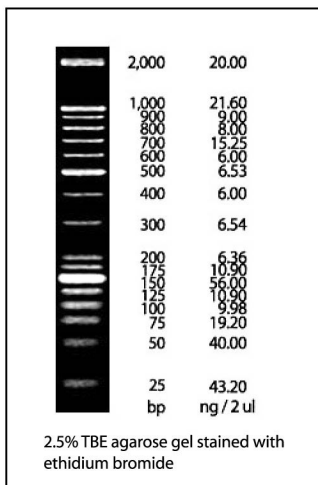
## 100 bp DNA Ladder



- Designed to determine the size of double stranded DNA from 100 to 2,000 base pairs.
- Consists of 13 bands. 10 double stranded DNA fragments ranging in size from 100 to 1,000 bp in 100 bp increments and 3 additional fragments at 1,200, 1,600, and 2,000 bp.
- Reference bands at 500, 1,000 and 2,000 bp are two to three times brighter for easy identification.

Concentration	135 ng/ul
Recommended Loading	1.5 - 2.0 ul / 5 mm lane width
Typical Number of Lanes	125 - 166 (5 mm lane width)
Size Range (bp)	100 - 2,000
Number of Bands	13

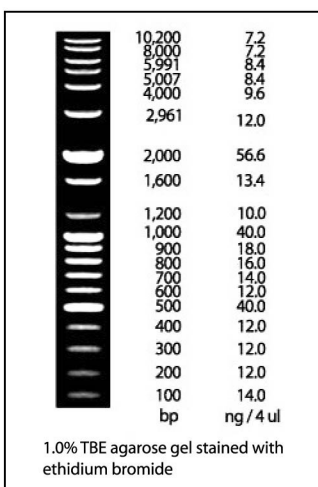
## 25/100 bp Mixed DNA Ladder



- Designed to determine the size of double stranded DNA from 25 to 2,000 base pairs.
- Consists of 17 bands. 8 double stranded DNA fragments ranging in size from 25 to 200 bp in 25 bp increments, 8 fragments from 300 to 1,000 bp in 100 bp increments, and an additional fragment at 2,000 bp.
- Reference bands at 150, 500, 1,000 and 2,000 bp are two to three times brighter for easy identification.

Concentration	150 ng/ul
Recommended Loading	2.0 ul / 5 mm lane width
Typical Number of Lanes	125 (5 mm lane width)
Size Range (bp)	25 - 2,000
Number of Bands	17

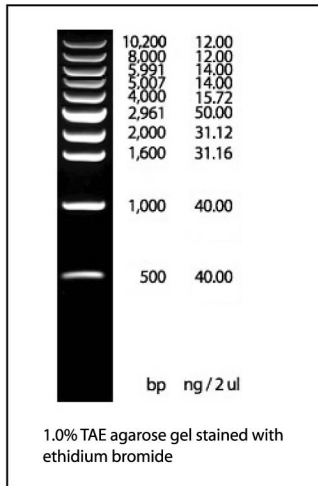
## 100 bp Plus DNA Ladder



- Designed to determine the size of double stranded DNA from 100 to 10,200 base pairs.
- Consists of 19 bands. 10 double stranded DNA fragments ranging in size from 100 to 1,000 bp in 100 bp increments and 9 fragments from 1,200 to 10,200 bp.
- Reference bands at 200, 1,000 and 2,000 bp are two to three times brighter for easy identification.

Concentration	80.7 ng/ul
Recommended Loading	3.0 - 4.0 ul / 5 mm lane width
Typical Number of Lanes	125 - 166 (5 mm lane width)
Size Range (bp)	100 - 10,200
Number of Bands	19

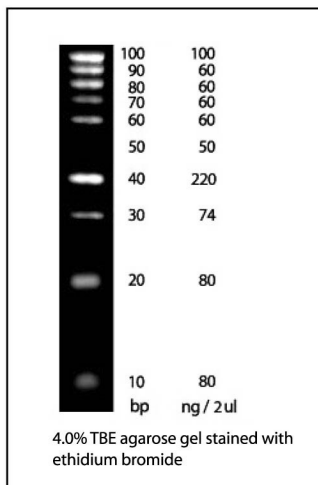
## 1 kb DNA Ladder



- Designed to determine the size of double stranded DNA ranging from 500 to 10,200 base pairs.
- Consist of 10 double stranded DNA fragments ranging in size from 500 to 10,200 bp.
- A reference band at 2,961 kb is approximately two to three times brighter for easy identification.

Concentration	130 ng/ul
Recommended Loading	1.5 - 2.0 ul / 5 mm lane width
Typical Number of Lanes	250 - 333 (5 mm lane width)
Size Range (bp)	500 - 10,200
Number of Bands	10

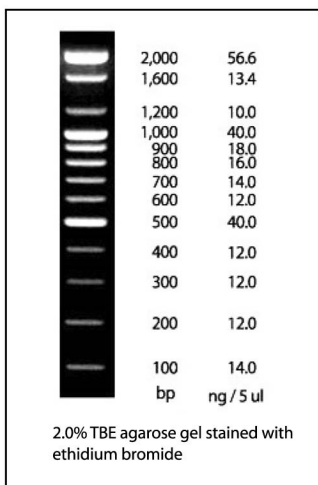
## 10 bp DNA Ladder



- Designed to determine the size of double stranded DNA from 10 to 100 base pairs.
- Consists of 9 double stranded DNA fragments ranging in size from 10 to 100 bp in 10 bp increments.
- A reference band at 40 bp is two to three times brighter for easy identification.

Concentration	522 ng/ul
Recommended Loading	1.5 - 2.0 ul / 5 mm lane width
Typical Number of Lanes	50 - 66 (5 mm lane width)
Size Range (bp)	10 - 100
Number of Bands	9

## AccuLadder™ 100 bp DNA Size Markers

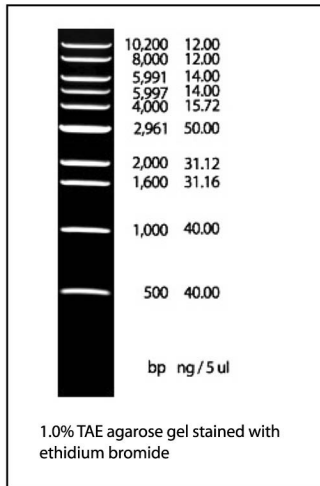


### High resolution - brighter and sharper ▶▶

- Designed to determine the size of double stranded DNA from 100 to 2,000 base pairs. *AccuLadder™* is sharper and brighter than our standard 100 bp ladder.
- Consists of 13 bands. 10 double stranded DNA fragments ranging in size from 100 to 1,000 bp in 100 bp increments and 3 additional fragments at 1,200, 1,600, and 2,000 bp.
- Reference bands at 500, 1,000 and 2,000 bp are two to three times brighter for easy identification.

Concentration	54 ng/ul
Recommended Loading	4 - 5 ul / 5 mm lane width
Typical Number of Lanes	126 - 157 (5 mm lane width)
Size Range (bp)	100 - 2,000
Number of Bands	13

## AccuLadder™ 1 kb DNA Size Markers

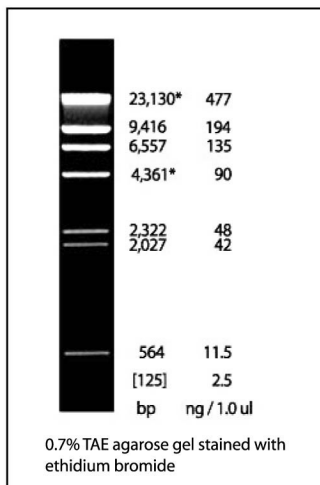


### High resolution - brighter and sharper ▶▶

- Designed to determine the size of double stranded DNA ranging from 500 to 10,200 base pairs. *AccuLadder™* is sharper and brighter than our standard 1 kb ladder.
- Consist of 10 double stranded DNA fragments ranging in size from 500 to 10,200 bp.
- A reference band at 2.961 kb is approximately two to three times brighter for easy identification.

Concentration	65 ng/ul
Recommended Loading	4 - 5 ul / 5 mm lane width
Typical Number of Lanes	200 - 250 (5 mm lane width)
Size Range (bp)	500 - 10,200
Number of Bands	10

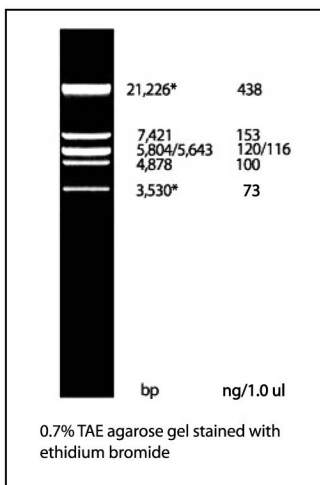
## Lambda DNA/*Hind* III Markers



- Created by digesting lambda DNA with *Hind* III.
- Consist of 8 double stranded DNA fragments ranging in size from 125 to 23,130 base pairs.

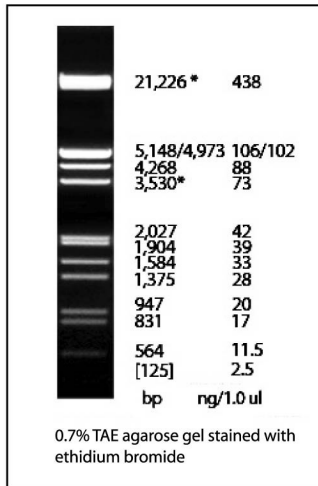
Concentration	200 ng/ul
Recommended Loading	2.5 ul / 5 mm lane width
Typical Number of Lanes	200 (5 mm lane width)
Size Range (bp)	125 - 23,130
Number of Bands	8

## Lambda DNA/*Eco*R I Markers



- Created by digesting lambda DNA with *Eco*R I.
- Consist of 6 double strand DNA fragments ranging in size from 3,530 to 21,226 base pairs.

Concentration	200 ng/ul
Recommended Loading	2.5 ul / 5 mm lane width
Typical Number of Lanes	200 (5 mm lane width)
Size Range (bp)	3,530 - 21,226
Number of Bands	6

Lambda DNA/*EcoR* I + *Hind* III Markers

- Created by digesting lambda DNA with *EcoR* I and *Hind* III.
- Consist of 13 double strand DNA fragments ranging in size from 125 to 21,226 base pairs.

Concentration	200 ng/ul
Recommended Loading	2.5 ul / 5 mm lane width
Typical Number of Lanes	200 (5 mm lane width)
Size Range (bp)	125 - 21,226
Number of Bands	13

## Notice to Purchaser

ALL PRODUCTS: FOR RESEARCH USE ONLY. NOT FOR USE IN DIAGNOSTIC PROCEDURES.

## Ordering Information

Cat. No.	Product Name	Details
<b>Ladders</b>		
D-1030	100 bp DNA Ladder	250 ul (135 ng/ul)
D-1031	100 bp DNA Ladder	1,250 ul (250 ul x 5)
D-1020	25/100 bp Mixed DNA Ladder	250 ul (150 ng/ul)
D-1021	25/100 bp Mixed DNA Ladder	1,250 ul (250 ul x 5)
D-1035	100 bp Plus DNA Ladder	500 ul (80.75 ng/ul)
D-1036	100 bp Plus DNA Ladder	2,500 ul (500 ul x 5)
D-1040	1 kb DNA Ladder	500 ul (130 ng/ul)
D-1041	1 kb DNA Ladder	2,500 ul (500 ul x 5)
D-1010	10 bp DNA Ladder	100 ul (522 ng/ul)
<b>AccuLadders™</b>		
D-1030-1	AccuLadder™ 100 bp DNA Size Marker	630 ul (54 ng/ul)
D-1040-1	AccuLadder™ 1 kb DNA Size Marker	1000 ul (65 ng/ul)
<b>Markers</b>		
D-1050	Lambda DNA/ <i>Hind</i> III Markers	500 ul (0.2 ug/ul)
D-1060	Lambda DNA/ <i>EcoR</i> I Markers	500 ul (0.2 ug/ul)
D-1070	Lambda DNA/ <i>EcoR</i> I + <i>Hind</i> III Markers	500 ul (0.2 ug/ul)

## Contact Us

**Bioneer Corporation**  
49-3 Munpyeong-dong,  
Daedeok-gu, Daejeon 306-220,  
South Korea  
Tel: +82-42-930-8777  
Fax: +82-42-930-8688  
E-mail: sales@bioneer.com

**Bioneer, Inc.**  
1000 Atlantic Avenue  
Alameda, CA 94501 USA  
Toll free: 1-877-264-4300  
Fax: 1-510-865-0350  
E-mail: order.usa@bioneer.us.com

**Bioneer Trade(Shanghai) Co., Ltd**  
403 Room, Building 88, no. 887,  
Zuchongzhi Road, Zhangjiang High Tech Park,  
PuDong New District, Shanghai 201203, China  
Tel: +86-21-5080-0969  
Fax: +86-21-5080-1620  
E-mail: asan@bioneer.com

**Seoul Office**  
Sansu Building 2nd floor,  
6, Yangjae-dong, Seocho-gu, Seoul  
137-130, South Korea  
Tel: +82-2-598-1094  
Fax: +82-2-598-1096



## DNA Ladders and Markers Selection Chart

