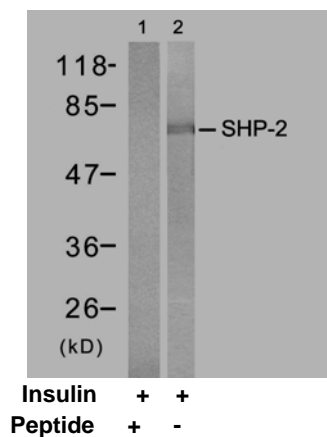


## Rabbit anti SHP-2 (Ab-542)

- Catalog Number:** AP21319  
**Amount:** 100µl (For 10 Western Blotting)  
**Swiss-Prot No. :** Q06124  
**Form of Antibody:** Rabbit IgG in phosphate buffered saline (without Mg<sup>2+</sup> and Ca<sup>2+</sup>), pH 7.4, 150mM NaCl, 0.02% sodium azide and 50% glycerol.  
**Storage/Stability:** Store at -20°C/1 year  
**Immunogen:** The antiserum was produced against synthesized non-phosphopeptide derived from human SHP-2 around the phosphorylation site of tyrosine 542 (H-E-Y<sup>P</sup>-T-N).  
**Purification:** The antibody was affinity-purified from rabbit antiserum by affinity-chromatography using epitope-specific immunogen.  
**Specificity/Sensitivity:** SHP-2 (Ab-542) antibody detects endogenous levels of total SHP-2 protein.  
**Reactivity:** Human, Mouse, Rat  
**Applications:** WB: 1:1000  
**References:** Ferjoux G, et al. (2003) Mol Biol Cell. 2003; 14(9): 3911-3928.  
Shi ZQ, et al. (2000) Mol Cell Biol ; 20(5): 1526-1536.  
Li C, Friedman JM. (1999) Proc Natl Acad Sci U S A ; 96(17): 9677-9682  
Mañes S, et al. (1999) Mol Cell Biol ; 19(4): 3125-3135.  
Oh ES, et al. (1999) Mol Cell Biol; 19(4): 3205-3215.



Western blot analysis of extracts from NIH/3T3 cells treated with insulin (100nM, 15min), using SHP-2 (Ab-542) antibody (AP21319, Lane 1 and 2).

**For Research Use Only**

Contact & Ordering Information: Angio-Proteomie, 11 Park Drive, Suite 12, Boston, MA 02215, USA. Fax: (480) 247-4337, [angioproteomie@gmail.com](mailto:angioproteomie@gmail.com)