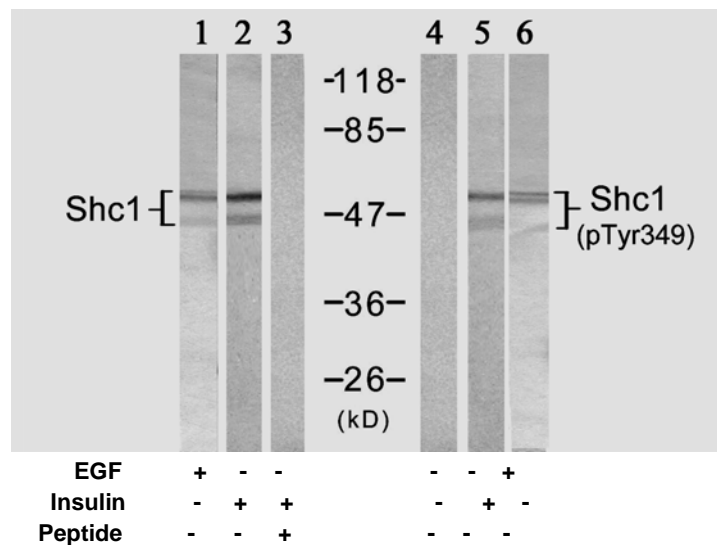


## Rabbit anti Shc1 (Ab-349)

- Catalog Number:** AP21316  
**Amount:** 100µl (for 10 Western Blotting)  
**Swiss-Prot No. :** P29353  
**Form of Antibody:** Rabbit IgG in phosphate buffered saline (without Mg<sup>2+</sup> and Ca<sup>2+</sup>), pH 7.4, 150mM NaCl, 0.02% sodium azide and 50% glycerol.  
**Storage/Stability:** Store at -20°C/1 year  
**Immunogen:** The antiserum was produced against synthesized non-phosphopeptide derived from human Shc1 around the phosphorylation site of tyrosine 349 (H-Q-Y<sup>P</sup>-Y-N).  
**Purification:** The antibody was affinity-purified from rabbit antiserum by affinity-chromatography using epitope-specific immunogen.  
**Specificity/Sensitivity:** Shc1 (Ab-349) antibody detects endogenous levels of total Shc1 protein.  
**Reactivity:** Human, Mouse  
**Applications:** WB: 1:1000  
**References:** Tramont P, et al. (2006) Mol Cell Biol; 26(23): 9035-9044.  
 Patrussi L, et al. (2005) Oncogene; 24(13): 2218-2228  
 van der Geer P, et al. (1996) Curr Biol ; 6(11): 1435-1444



Western blot analysis of extracts from 293 cells, using Shc1 (Ab-349) Antibody (AP21316, Lane 1, 2 and 3) and Shc1 (Phospho-Tyr349) Antibody (pAP11316, Lane 4, 5 and 6).

**For Research Use Only**

Contact & Ordering Information: Angio-Proteomie, 11 Park Drive, Suite 12, Boston, MA 02215, USA. Fax: (480) 247-4337, [angioproteomie@gmail.com](mailto:angioproteomie@gmail.com)