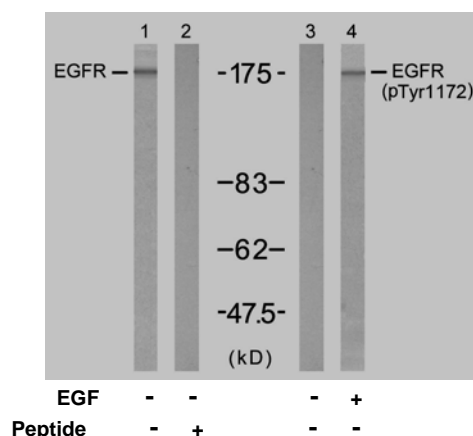


## Rabbit anti EGFR (Ab-1172)

- Catalog Number:** AP21213  
**Amount:** 100µl (for 10 Western Blotting)  
**Swiss-Prot No. :** P00533  
**Form of Antibody:** Rabbit IgG in phosphate buffered saline (without Mg<sup>2+</sup> and Ca<sup>2+</sup>), pH 7.4, 150mM NaCl, 0.02% sodium azide and 50% glycerol.  
**Storage/Stability:** Store at -20°C/1 year  
**Immunogen:** The antiserum was produced against synthesized non-phosphopeptide derived from human EGFR around the phosphorylation site of tyrosine 1172 (P-D-Y<sup>P</sup>-Q-Q).  
**Purification:** The antibody was affinity-purified from rabbit antiserum by affinity-chromatography using epitope-specific immunogen.  
**Specificity/Sensitivity:** EGFR (Ab-1172) antibody detects endogenous levels of total EGFR protein.  
**Reactivity:** Human, Mouse, Rat  
**Applications:** WB: 1:1000  
**References:** Noguchi T, et al. (1994) Mol Cell Biol; 14(10): 6674-6682  
Doherty JK, et al. (1999) Proc Natl Acad Sci U S A; 96(19): 10869-10874  
Kanner SB, et al. (1991) Mol Cell Biol; 11(2): 713-720  
Wu TT, et al. (1998) Mol Biol Cell; 9(7): 1661-1674  
O'Rourke DM, et al. (1997) Proc Natl Acad Sci U S A; 94(7): 3250-3255



Western blot analysis of extract from A431 cell untreated or treated with EGF (200ng/ml, 5min), using EGFR (Ab-1172) antibody (AP21213, Lane 1 and 2) and EGFR (phospho-Tyr1172) antibody (pAP11220, Lane 3 and 4).

**For Research Use Only**

Contact & Ordering Information: Angio-Proteomie, 11 Park Drive, Suite 12, Boston, MA 02215, USA. Fax: (480) 247-4337, [angioproteomie@gmail.com](mailto:angioproteomie@gmail.com)