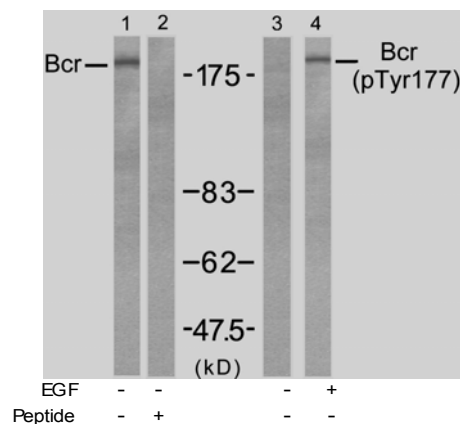


## Rabbit anti Bcr (Ab-177)

- Catalog Number:** E021197  
**Amount:** 100µl (for 10 Western Blotting)  
**Swiss-Prot No. :** P11274  
**Form of Antibody:** Rabbit IgG in phosphate buffered saline (without Mg<sup>2+</sup> and Ca<sup>2+</sup>), pH 7.4, 150mM NaCl, 0.02% sodium azide and 50% glycerol.  
**Storage/Stability:** Store at -20°C/1 year  
**Immunogen:** The antiserum was produced against synthesized non-phosphopeptide derived from human Bcr around the phosphorylation site of tyrosine 177 (P-F-Y<sup>P</sup>-V-N).  
**Purification:** The antibody was affinity-purified from rabbit antiserum by affinity-chromatography using epitope-specific immunogen.  
**Specificity/Sensitivity:** Bcr (Ab-177) antibody detects endogenous levels of total Bcr protein.  
**Reactivity:** Human, Mouse  
**Applications:** WB: 1:1000  
**References:** Sattler M, et al. Mol Cell Biol. 1999 Nov; 19(11): 7473-7480.  
Li S et al. EMBO J. 2001 Dec 3; 20(23): 6793-6804.  
Million RP, et.al. Mol Cell Biol. 2004 Jun; 24(11): 4685-4695.  
Malcolm A. Meyn, et al. . Biol. Chem., Oct 2006; 281: 30907 – 30916.



Western blot analysis of extract from A431 cells, untreated or treated with EGF (200ng/ml, 5min), using Bcr (Ab-177) antibody (AP21197, Lane 1 and 2) and Bcr(phospho-Tyr177) antibody (pAP11199, Lane 3 and 4).

**For Research Use Only**

Contact & Ordering Information: Angio-Proteomie, 11 Park Drive, Suite 12, Boston, MA 02215, USA. Fax: (480) 247-4337, [angioproteomie@gmail.com](mailto:angioproteomie@gmail.com)