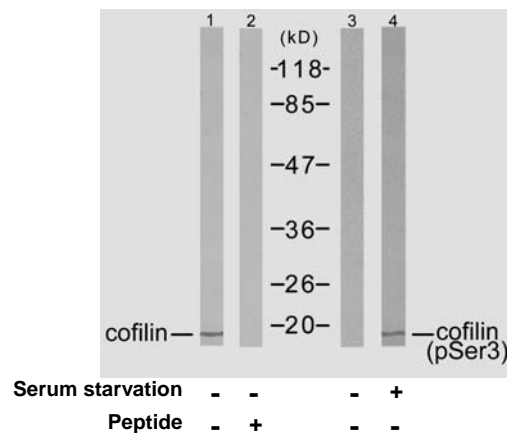




11 Park Drive, Suite 12
Boston, MA 02215

Rabbit anti Cofilin (Ab-3)

- Catalog Number:** AP21164
Amount: 100µl (for 10 Western Blotting)
Form of Antibody: Rabbit IgG in phosphate buffered saline (without Mg²⁺ and Ca²⁺), pH 7.4, 150mM NaCl, 0.02% sodium azide and 50% glycerol.
Storage/Stability: Store at -20°C/1 year
Immunogen: The antiserum was produced against synthesized non-phosphopeptide derived from human cofilin around the phosphorylation site of serine 3 (M-A-S^P-G-V).
Purification: The antibody was affinity-purified from rabbit antiserum by affinity-chromatography using epitope-specific immunogen.
Specificity/Sensitivity: cofilin (Ab-1022) antibody detects endogenous levels of total cofilin protein.
Reactivity: Human, Mouse, Rat
Applications: WB: 1:1000
Swiss-Prot No. : P23528
References: Kobayashi M, et al. (2006) EMBO J 25(4): 713-26.
Wang Y, et al. (2005) Biol Chem 280(13): 12683-9.
Smith-Beckerman DM, et al. (2005) Mol Cell Proteomics: 156-68.



Western blot analysis of extracts from COLO205 cells using cofilin (Ab-3) antibody (AP21164, Lane 1 and 2) and cofilin (phospho-Ser3) antibody (pAP11139, Lane 3 and 4).

For Research Use Only

Contact & Ordering Information: Angio-Proteomie, 11 Park Drive, Suite 12, Boston, MA 02215, USA. Fax: (480) 247-4337, angioproteomie@gmail.com