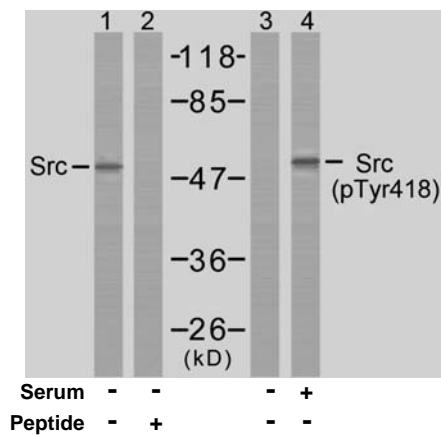


## Rabbit anti Src (Ab-418)

- Catalog Number:** AP21115  
**Amount:** 100µl (for 10 Western Blotting)  
**Form of Antibody:** Rabbit IgG in phosphate buffered saline (without Mg<sup>2+</sup> and Ca<sup>2+</sup>), pH 7.4, 150mM NaCl, 0.02% sodium azide and 50% glycerol.  
**Storage/Stability:** Store at -20°C/1 year  
**Immunogen:** The antiserum was produced against synthesized non-phosphopeptide derived from human Src around the phosphorylation site of tyrosine 418 (N-E-Y<sup>P</sup>-T-A).  
**Purification:** The antibody was affinity-purified from rabbit antiserum by affinity-chromatography using epitope-specific immunogen.  
**Specificity/Sensitivity:** Src (Ab-418) antibody detects endogenous levels of total Src protein.  
**Reactivity:** Human, Mouse, Rat  
**Applications:** WB: 1:1000  
**Swiss-Prot No. :** P12931  
**References:** Dufilho M, et al. (2005) J Biol Chem. 280(43):35999-36006.  
Sanders MA, et al. (2005) J Biol Chem. 280(25): 23516-23522.  
Murugappan S, et al. (2005) Blood. 106(2):550-557.  
Gu JJ, et al. (2005) Blood. 105(8): 3270-3277.  
Zhou S, et al. (2004) J Biol Chem.279 (52): 54463-54469.



Western blot analysis of extracts from COLO205 cells using Src (Ab-418) antibody (AP21115, Lane 1 and 2) and Src (phospho-Tyr418) antibody (pAP11091, Lane 3 and 4).

**For Research Use Only**

Contact & Ordering Information: Angio-Proteomie, 11 Park Drive, Suite 12, Boston, MA 02215, USA. Fax: (480) 247-4337, [angioproteomie@gmail.com](mailto:angioproteomie@gmail.com)