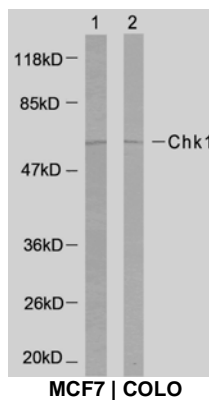




11 Park Drive, Suite 12  
Boston, MA 02215

## Rabbit anti Chk1 (Ab-317)

- Catalog Number:** AP21114  
**Amount:** 100µl (For 10 Western Blotting)  
**Form of Antibody:** Rabbit IgG in phosphate buffered saline (without Mg<sup>2+</sup> and Ca<sup>2+</sup>), pH 7.4, 150mM NaCl, 0.02% sodium azide and 50% glycerol.  
**Storage/Stability:** Store at -20°C/1 year  
**Immunogen:** The antiserum was produced against synthesized non-phosphopeptide derived from human Chk1 around the phosphorylation site of serine 317 (S-S<sup>P</sup>-Q-P)  
**Purification:** The antibody was affinity-purified from rabbit antiserum by affinity-chromatography using epitope-specific immunogen.  
**Specificity/Sensitivity:** Chk1 (Ab-317) antibody detects endogenous levels of total Chk1 protein.  
**Reactivity:** Human, Rat  
**Applications:** WB: 1:1000  
**Swiss-Prot No. :** O14757  
**References:** Zhang YW, et al. (2005) Mol Cell; 19(5): 607-18.  
Bhounik A, et al. (2005) Mol Cell; 18(5): 577-87.  
Rocha S, et al. (2005) EMBO J.  
Clarke CA, et al. (2005) Biochem J.  
Yu X, et al. (2004) Mol Cell Biol; 24(21): 9478-86.



Western blot analysis of the extracts using Chk1 (Ab-317) antibody (AP21114).

**For Research Use Only**

Contact & Ordering Information: Angio-Proteomie, 11 Park Drive, Suite 12, Boston, MA 02215, USA. Fax: (480) 247-4337, [angioproteomie@gmail.com](mailto:angioproteomie@gmail.com)