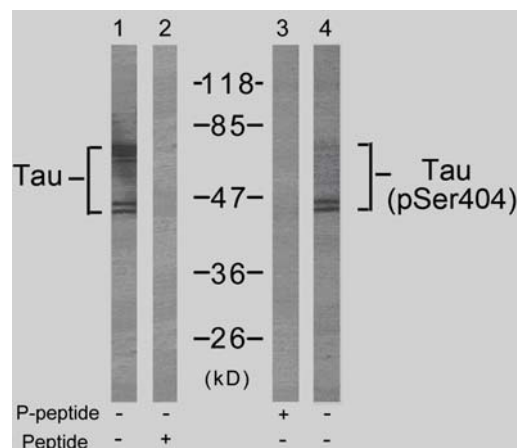


Rabbit anti Tau (Ab-404)

- Catalog Number:** AP21101
Amount: 100µl (for 10 Western Blotting)
Form of Antibody: Rabbit IgG in phosphate buffered saline (without Mg²⁺ and Ca²⁺), pH 7.4, 150mM NaCl, 0.02% sodium azide and 50% glycerol.
Storage/Stability: Store at -20°C/1 year
Immunogen: The antiserum was produced against synthesized non-phosphopeptide derived from human Tau around the phosphorylation site of serine 404 (D-T-S^P-P-R).
Purification: The antibody was affinity-purified from rabbit antiserum by affinity-chromatography using epitope-specific immunogen.
Specificity/Sensitivity: Tau (Ab-404) antibody detects endogenous levels of total Tau protein.
Reactivity: Human, Mouse, Rat
Applications: WB: 1:1000
Swiss-Prot No. : P10636
References: Li G, Yin H, et.al.(2004) J Biol Chem ; 279(16): 15938-45.
Noble W, et al. (2003) Neuron ; 38(4): 555-65.
Giasson BI, et al.(2002). Biochemistry; 41(51): 15376-87.
Lee G., et.al. (1989). Neuron 2:1615-1624.
Andreadis A.et.al. (1992) Biochemistry 31:10626-10633.



Western blot analysis of extract from mouse brain tissue using Tau (Ab-404) antibody (AP21101, Lane 1 and 2) and Tau (phospho-Ser404) antibody (pAP11112, Lane 3 and 4).

For Research Use Only

Contact & Ordering Information: Angio-Proteomie, 11 Park Drive, Suite 12, Boston, MA 02215, USA. Fax: (480) 247-4337, angioproteomie@gmail.com