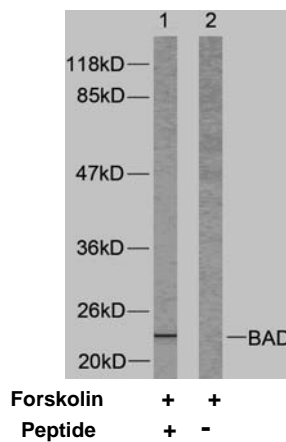




11 Park Drive, Suite 12  
Boston, MA 02215

## Rabbit anti BAD (Ab-112)

- Catalog Number:** AP21062  
**Amount:** 100µl (For 10 Western Blotting)  
**Form of Antibody:** Rabbit IgG in phosphate buffered saline (without Mg<sup>2+</sup> and Ca<sup>2+</sup>), pH 7.4, 150mM NaCl, 0.02% sodium azide and 50% glycerol.  
**Storage/Stability:** Store at -20°C/1 year  
**Immunogen:** The antiserum was produced against synthesized non-phosphopeptide derived from human BAD around the phosphorylation site of serine 112 (H-S-S<sup>P</sup>-Y-P).  
**Purification:** The antibody was affinity-purified from rabbit antiserum by affinity-chromatography using epitope-specific immunogen.  
**Specificity/Sensitivity:** BAD (Ab-112) antibody detects endogenous levels of total BAD protein.  
**Reactivity:** Human, Mouse, Rat  
**Applications:** WB: 1:1000  
**Swiss-Prot No. :** Q92934  
**References:** Zhang B, et al. (2004). Mol Cell Biol.24 (14): 6205-6214.  
Rice PL, et al. (2003). Cancer Res.63 (3): 616-620.  
Wang XQ, et al. (2001). J Biol Chem.276 (48): 44504-44511.



Western blot analysis of extracts from 293 cells using BAD (Ab-112) antibody (AP21062).

**For Research Use Only**

Contact & Ordering Information: Angio-Proteomie, 11 Park Drive, Suite 12, Boston, MA 02215, USA. Fax: (480) 247-4337, [angioproteomie@gmail.com](mailto:angioproteomie@gmail.com)