

AMPK1, Rabbit pAb

CATALOG #:	3112-100
AMOUNT:	100 µg
LOT #:	_____
HOST (ISOTYPE):	Rabbit (Ig)
IMMUNOGEN:	KLH conjugated synthetic peptide selected from the N-terminal region of human AMPK1.
SPECIES REACTIVITY:	Human

FORMULATION:

100 µg (0.25 mg/ml) purified rabbit Ig polyclonal antibody supplied in PBS with 0.09% (W/V) sodium azide. This antibody is prepared by Saturated Ammonium Sulfate (SAS) precipitation followed by dialysis against PBS.

STORAGE CONDITIONS:

Maintain refrigerated at 2-8°C for up to 6 months or -20°C for long term storage.

BACKGROUND DESCRIPTION:

AMPK1 belongs to the ser/thr protein kinase family. It is the catalytic subunit of the 5'-prime-AMP-activated protein kinase (AMPK). AMPK is a cellular energy sensor conserved in all eukaryotic cells. The kinase activity of AMPK is activated by the stimuli that increase the cellular AMP/ATP ratio. AMPK regulates the activities of a number of key metabolic enzymes through phosphorylation. It protects cells from stresses that cause ATP depletion by switching off ATP-consuming biosynthetic pathways.

Background References:

1. Stapleton D., Mitchelhill K.I.J. Biol. Chem. 271:611-614(1996)
2. Lizcano J.M., Goeransson O.EMBO J. 23:833-843(2004)
3. Hawley S.A., Pan D.A.Cell Metab. 2:9-19(2005)

OTHER NAMES:

5'-AMP-activated protein kinase catalytic subunit alpha-1; AMPK1

SPECIFICITY:

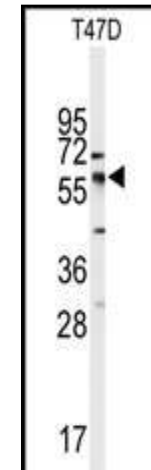
The antibody detects a ~63 kDa band, corresponding to the expected molecular mass of AMPK on immunoblots.

APPLICATION (suggested concentration):

The antibody can be used for ELISA (0.25 µg/ml), Western blotting (2.5 – 5.0 µg/ml).

FOR RESEARCH USE ONLY! Not to be used on humans.

APPLICATION DATA (Calculated MW = 62808Da):



Western blot analysis of anti-AMPK1 Antibody in Hela cell line lysates (35ug/lane). AMPK1 (arrow) was detected using the purified pAb.

RELATED PRODUCTS:

Apoptosis Detection Kits & Reagents

- Annexin V Kits & Bulk Reagents
- Caspase Assay Kits & Reagents
- Mitochondrial Apoptosis Kits & Reagents
- Nuclear Apoptosis Kits & Reagents
- Apoptosis Inducers and Set
- Apoptosis siRNA Vectors

Cell Fractionation System

- Mitochondria/Cytosol Fractionation Kit
- Nuclear/Cytosol Fractionation Kit
- Membrane Protein Extraction Kit
- Cytosol/Particulate Rapid Separation Kit
- Mammalian Cell Extraction Kit
- FractionPREP Fractionation System