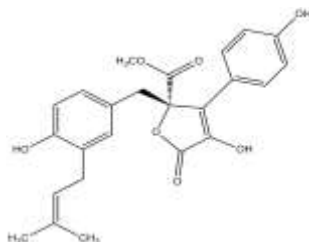


## Butyrolactone I

**ALTERNATE NAME:** BLI  
**CATALOG #:** 1690-200  
**AMOUNT:** 200 µg

**STRUCTURE:**



**MOLECULAR FORMULA:** C<sub>24</sub>H<sub>24</sub>O<sub>7</sub>  
**MOLECULAR WEIGHT:** 424.44  
**CAS NUMBER:** 87414-49-1  
**APPEARANCE:** White solid  
**SOLUBILITY:** DMSO (10 mg/ml) and Ethanol (25 mg/ml)  
**PURITY:** >99% by HPLC  
**STORAGE:** Store at -20°C.

**DESCRIPTION:** Cell permeable. A potent and selective inhibitor of the cyclin-dependent kinases CDK1/cyclin B, CDK2 and CDK5. Inhibits cell cycle progression at the G1/S and G2/M transitions. BLI is an important tool for probing the cellular roles of CDKs. It blocks Fas-induced apoptosis and displays antitumor activity.

**REFERENCES:** Nishio, K., *et al.* (1996). *Anticancer Res.* **16**, 3387-3395; Kitagawa, M., *et al.* (1993). **9**, 2425-2432.

**HANDLING:** Do not take internally. Wear gloves and mask when handling the product! Avoid contact by all modes of exposure.

**FOR RESEARCH USE ONLY! Not to be used in humans.**

**RELATED PRODUCTS:**

- Protein Kinase Inhibitors
- Active Kinases